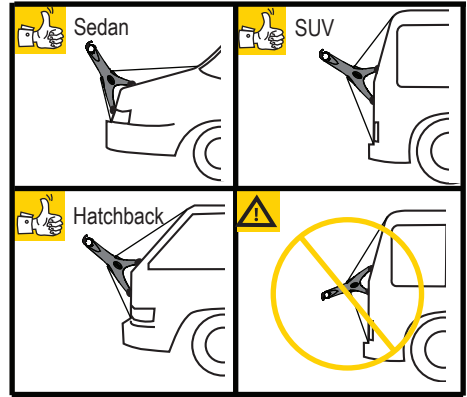


# SOLO INSTALLATION GUIDE

**1** Select type of vehicle and check Saris Fit Guide for approved fits. [www.saris.com](http://www.saris.com)



**3**

Max: 35lb / 16kg

△ Exhaust Min: 12"

**4**

△ Bike to car contact Pad as needed

**2**

1<sup>st</sup>

x4

Push

Pull

UPPER

LOWER

No X

No X

**5**

Keep bike from swinging freely by using the stabilizer strap against bike frame or pedal.

Saris Cycling Group  
5253 Verona Road  
Madison WI 53711  
800.783.7257  
[www.saris.com](http://www.saris.com)  
Patents Issued and Pending  
19137D 6/13

To activate your warranty visit [www.saris.com](http://www.saris.com)

Model 101B - Solo™

0 12527 00984 8